

FOR LEASE OFFICE



730 SW Bonnett Way

Mill Point Business Campus sits above the Deschutes River and is comprised of five Class A office buildings. Building 3000 fronts on Columbia Street, with access from Bonnett Way. There is ample parking (4 spaces per 1000 usf). Suite 3100 is mainly open office with reception, conference room, kitchenette and copy area. Tenant improvements are negotiable for a five (5) year lease term.

Building 3000 - Suite 3100

2,802 SF available

\$1.65/sf/mo NNN

Rent \$4,623.3/month

CAMS \$.79/sf/month

Great westside location

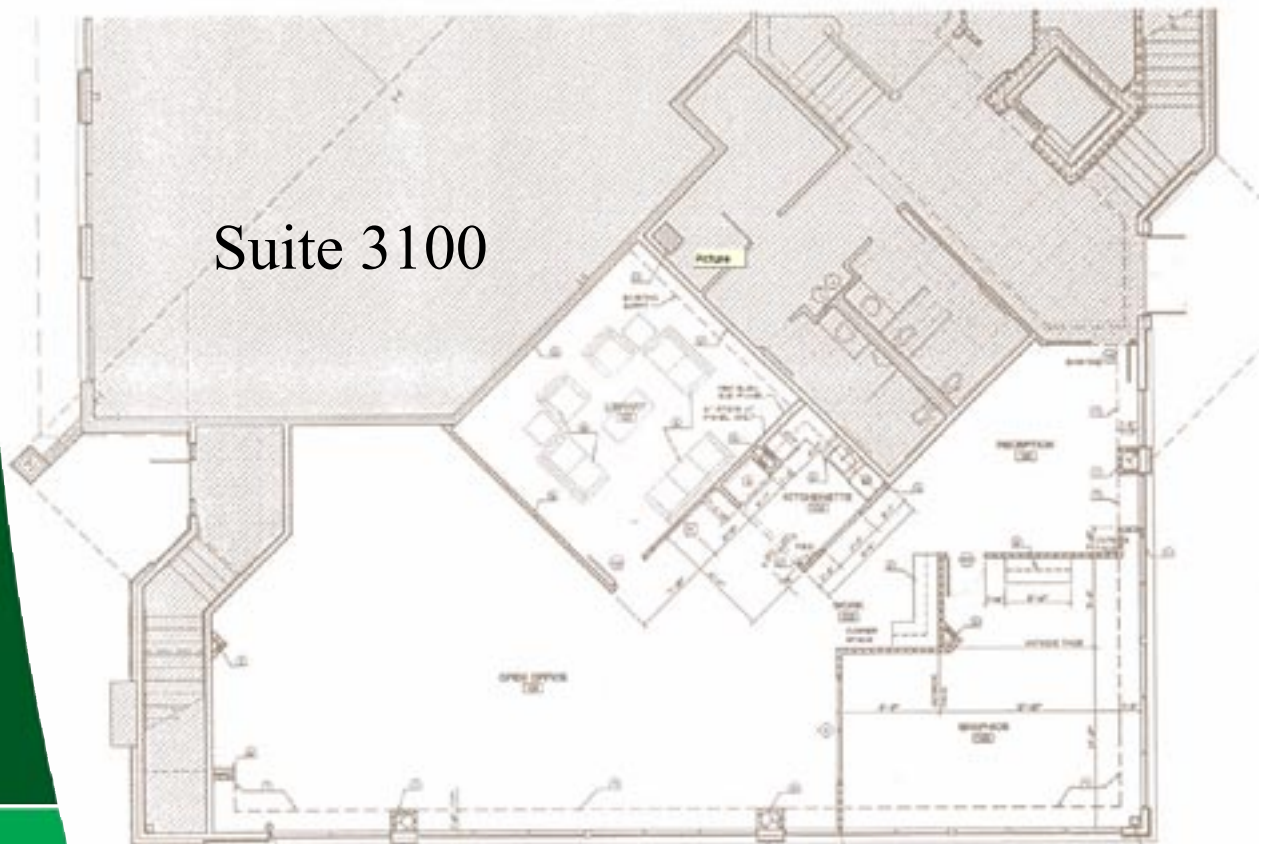
Available Immediately!



For more information, contact Listing Brokers
Amy Cawrse | 541-312-6887 | amy@olivercg.com
Patrick Oliver | 541-312-6888 | pato@olivercg.com



Building 3000



For more information, contact Listing Brokers
Amy Cawrse | 541-312-6887 | amy@olivercg.com
Patrick Oliver | 541-312-6888 | pato@olivercg.com



Mill Point Business Campus

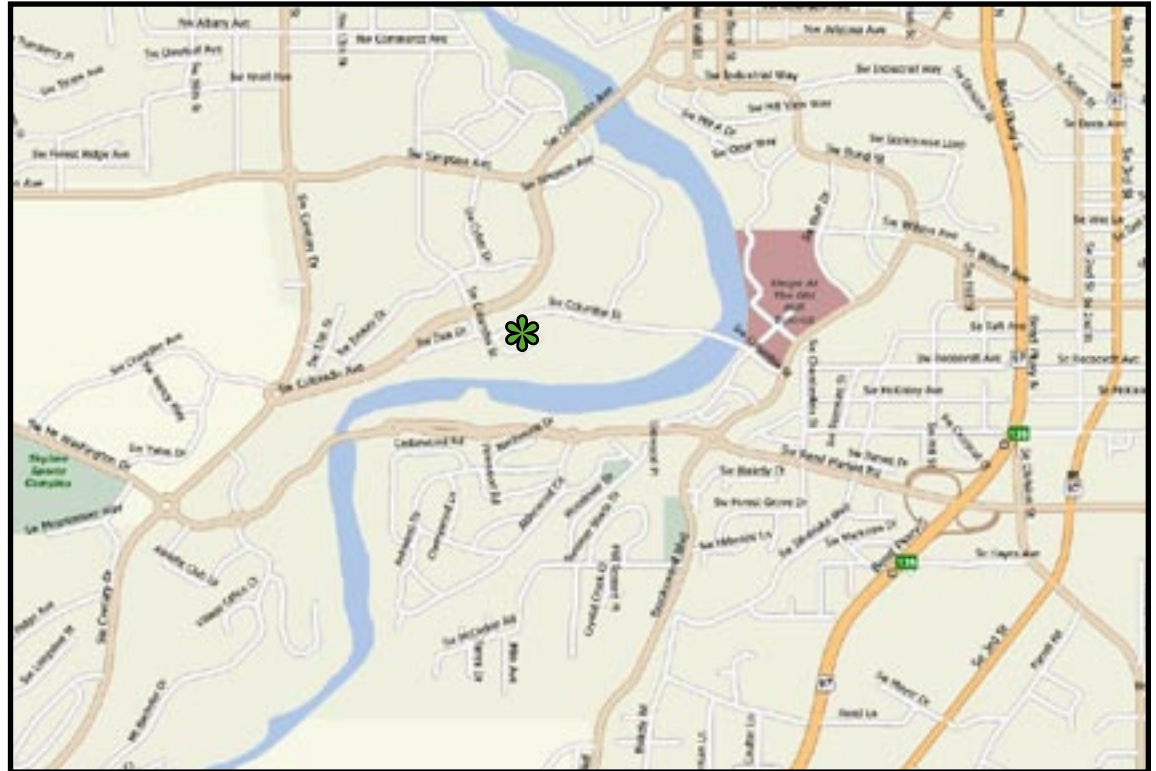
Mill Point Business Campus is a six building corporate park, on the bluffs of the Deschutes River. This Class A professional office campus is the largest office campus in Bend, Oregon.

- Established structures fully built out with high quality finishes.
- Amazing views in all directions.
- Prime location on Bend's westside, near downtown & the Old Mill District.
- High traffic intersection at Colorado Ave. and Columbia St.
- Abundance of parking.
- Premier office space with views of the river to the East and Cascade Mountains to the West.
- High power tenant mix.
- Extensive landscaping.
- On-site restaurant overlooking the Deschutes River.



For more information, contact Listing Brokers
Amy Cawrse | 541-312-6887 | amy@olivercg.com
Patrick Oliver | 541-312-6888 | pato@olivercg.com

Location



Exclusively Listed By



Amy Cawrse, Principal Broker
541-312-6887 (office)
541-410-9152 (cell)
amy@olivercrg.com



Patrick Oliver, Principal Broker
541-312-6888 (office)
541-480-7704 (cell)
pato@olivercrg.com

Information is from sources deemed reliable but not guaranteed or warranted and is subject to change without prior notice.



Oliver Commercial Group
164 NW Hawthorne Avenue, Bend, OR 97701
541-389-2770 (p) | 541-389-8317 (f) | www.olivercrg.com